



Easy With Your  
**Global Exhibitions**



CHANGZHOU · CHINA

Extend The Future  
**With Light**





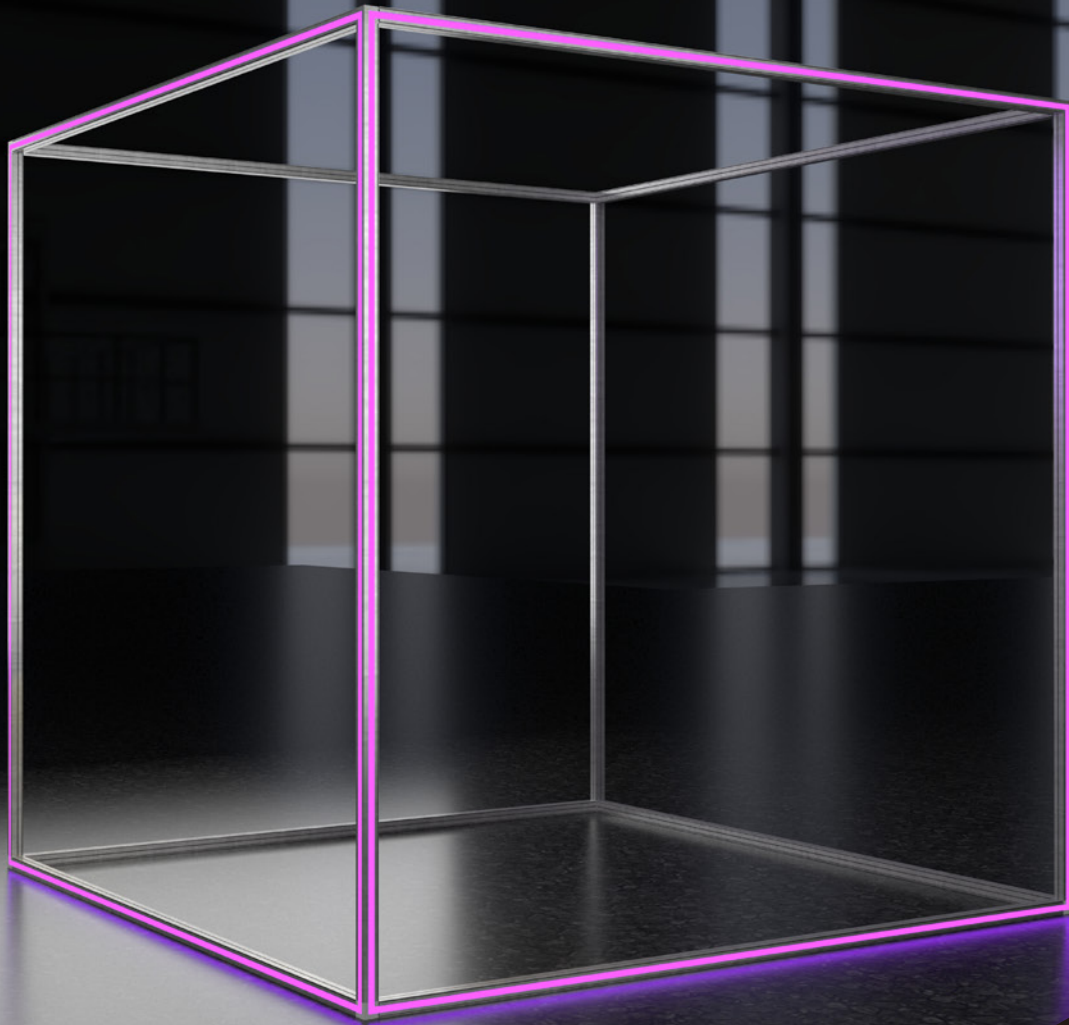
# Thinking about.

Urban lighting is everywhere in big cities, not only to provide lighting, but also to make the city's night glow. Good lighting not only let us imagine the future, but also let us feel the retro culture. Now, lighting is leading the trend of exhibition, more and more booths use a large number of lighting effects to do booth lighting, making the booth effect flowery color, eye-catching. How to apply this effect to your booth and product demonstration, this is our thinking.



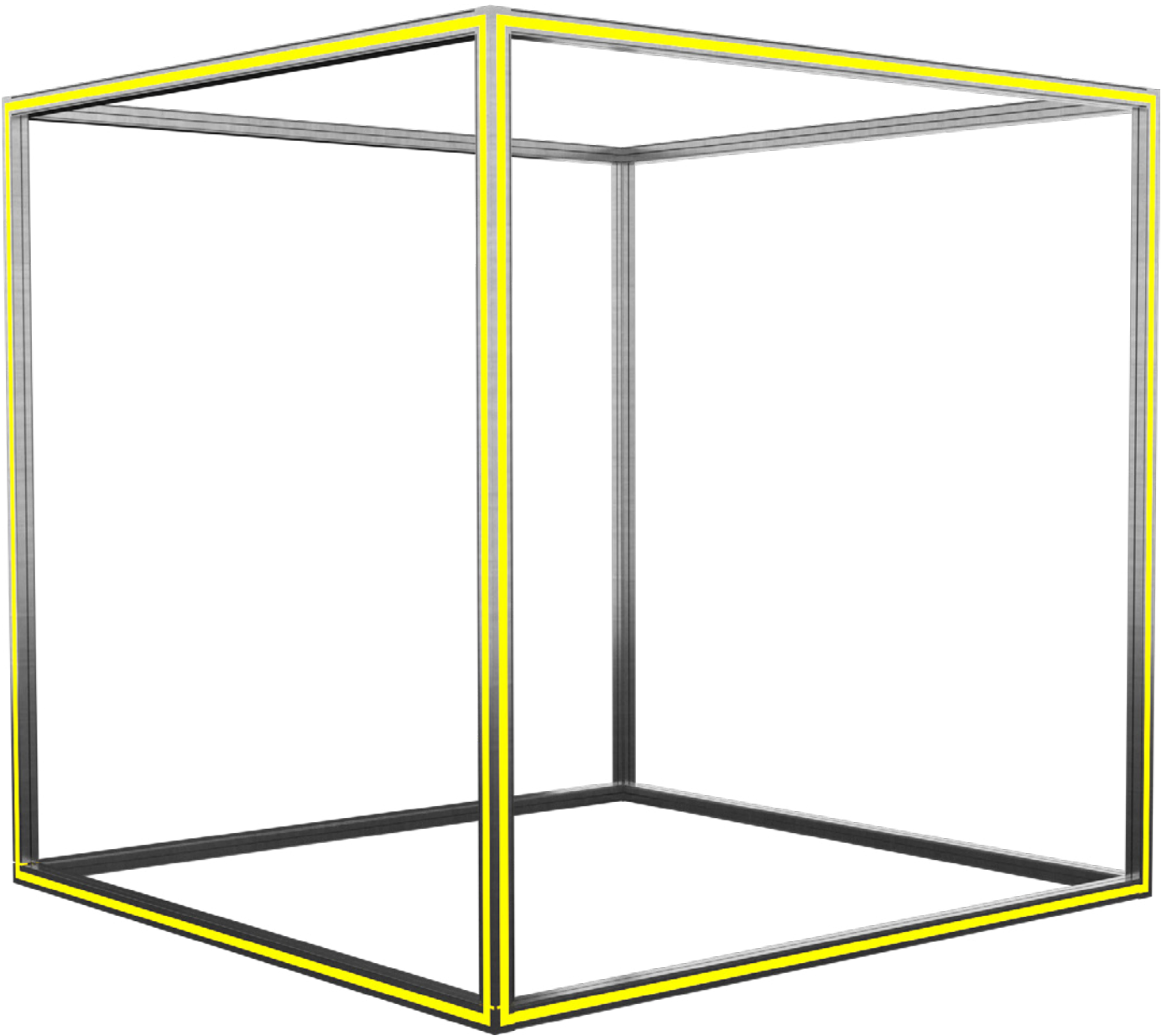
# STATE-OF-THE-ART TECHNOLOGY. RADIANT COLORS. 16.8 MILLION SHADES.

From RGB to warm white or cool white, 16.8 million colors are gorgeous and powerful. Combining the whole LED strip with the aluminum profile, we creatively developed the perfect display lighting solution -bestar.



# Dazzling light display system

1. Embedded led strip, smooth surface, good light transmission, unity is good.
2. Simple assembly, only a simple tool, one person can install.
3. Perfect fit with a variety of display systems, adding light and color.
4. Use a wide range of scenarios, exhibition display, product demonstration, artistic decorations, fast display and so on.



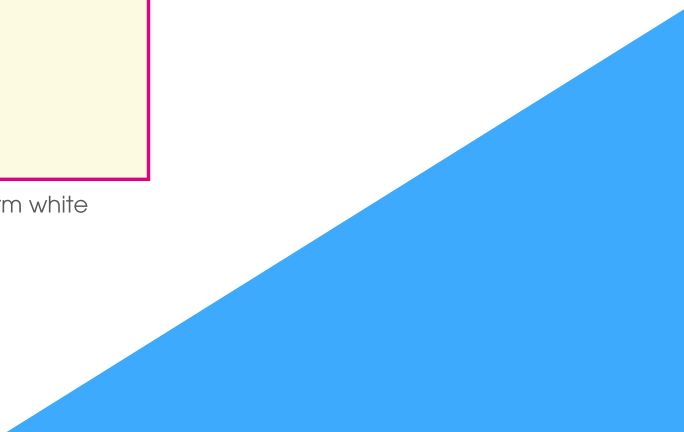
RGB



Cool white



Warm white

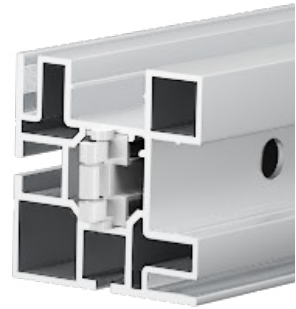
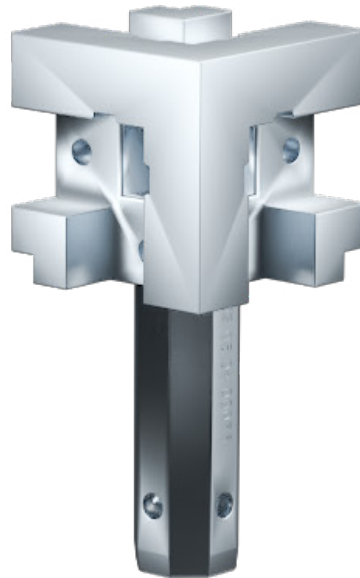


# How To Connect And Fix

Through the corner tee connector accessories, only need a simple tool, one person can finish the complete installation, easy and simple

## LED Strip Light Without Interruption

For the continuous effect of the led strip, we used a design structure to make the led strip perfectly connected, no matter how connected, the led strip can remain on.



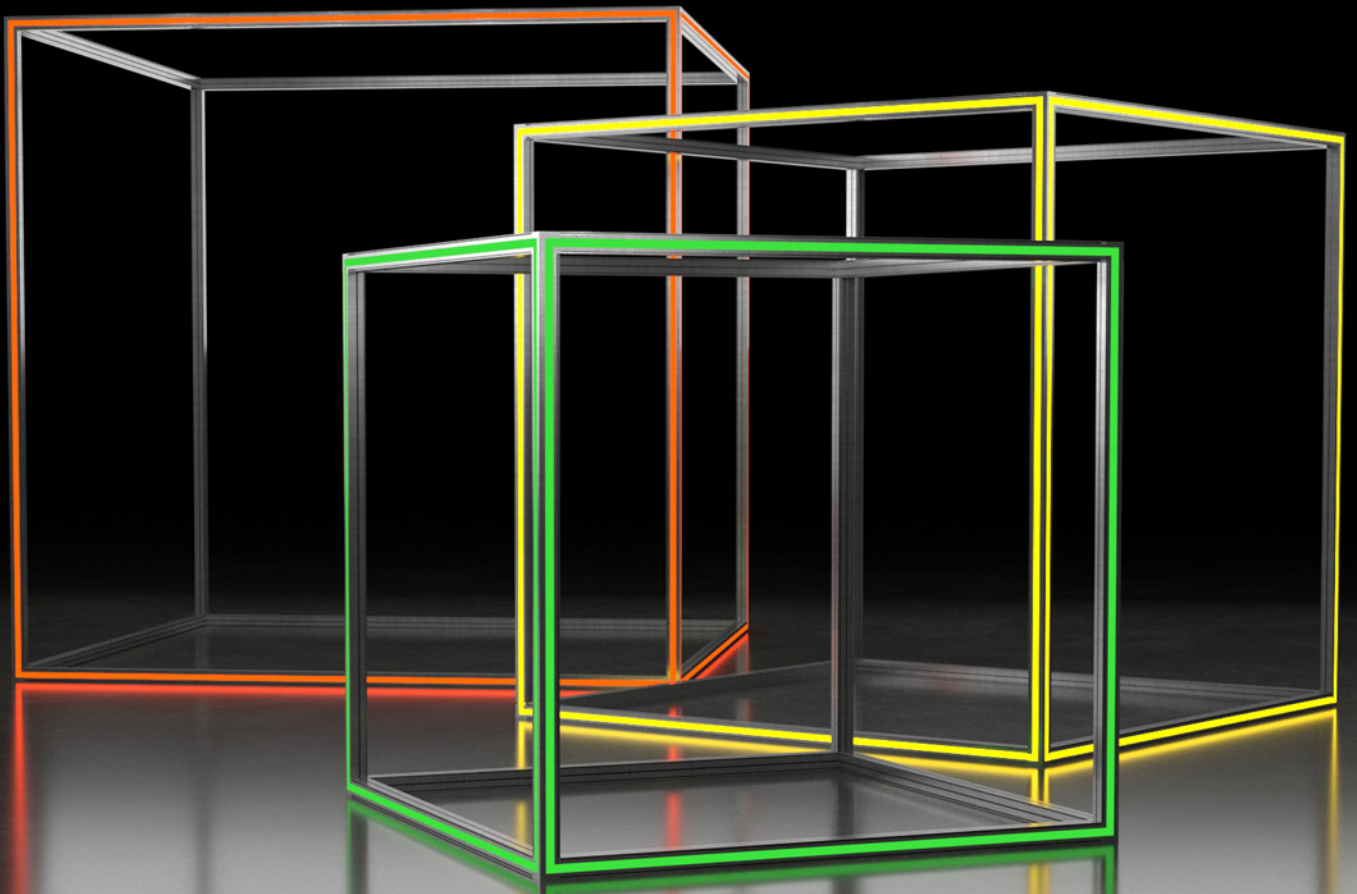
## High Strength Aluminum Alloy Material Silicone Cover

embedded in the interior, the surface of the silicone cover, good light transmission, uniform light.

## LED High Brightness And Long Life

brightness led strip, uniform color, long life, durable. Can withstand multiple uses without replacement.





# Light Brings Endless Possibilities

Yellow for energy, red for enthusiasm,

Different light colors may show completely different effects.

The combination of light and display design can express a variety of atmospheric effects.

bestar dazzling light display system, the perfect solution for light and display design.



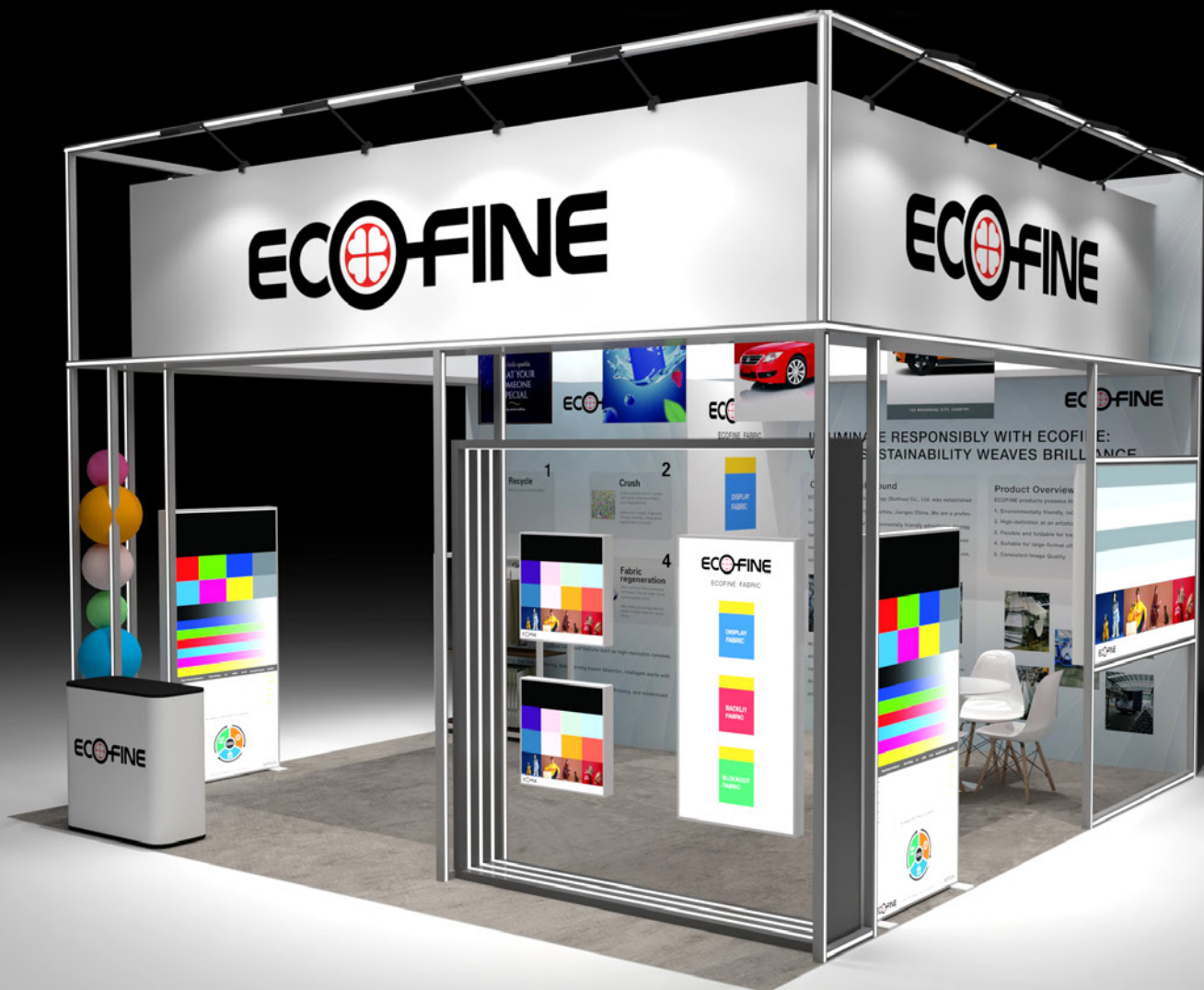
Booth Solution

36 m<sup>2</sup>SQM/Height 36m<sup>2</sup> 4.5m

Time 5hours / 3person

Surface Material SEG

Booth Solution

36 m<sup>2</sup>SQM/Height 36m<sup>2</sup> 5m

Time 8hours/ 5person

Surface Material SEG

Booth Solution

54<sup>m<sup>2</sup></sup>SQM/Height 54m<sup>2</sup> 5m

Time 10hours/ 6person

Surface Material SEG

# Booth Solution 120m<sup>2</sup>



SQM/Height 120m<sup>2</sup> 4m

Time 16hours/ 8person

Surface Material SEG

Booth Solution

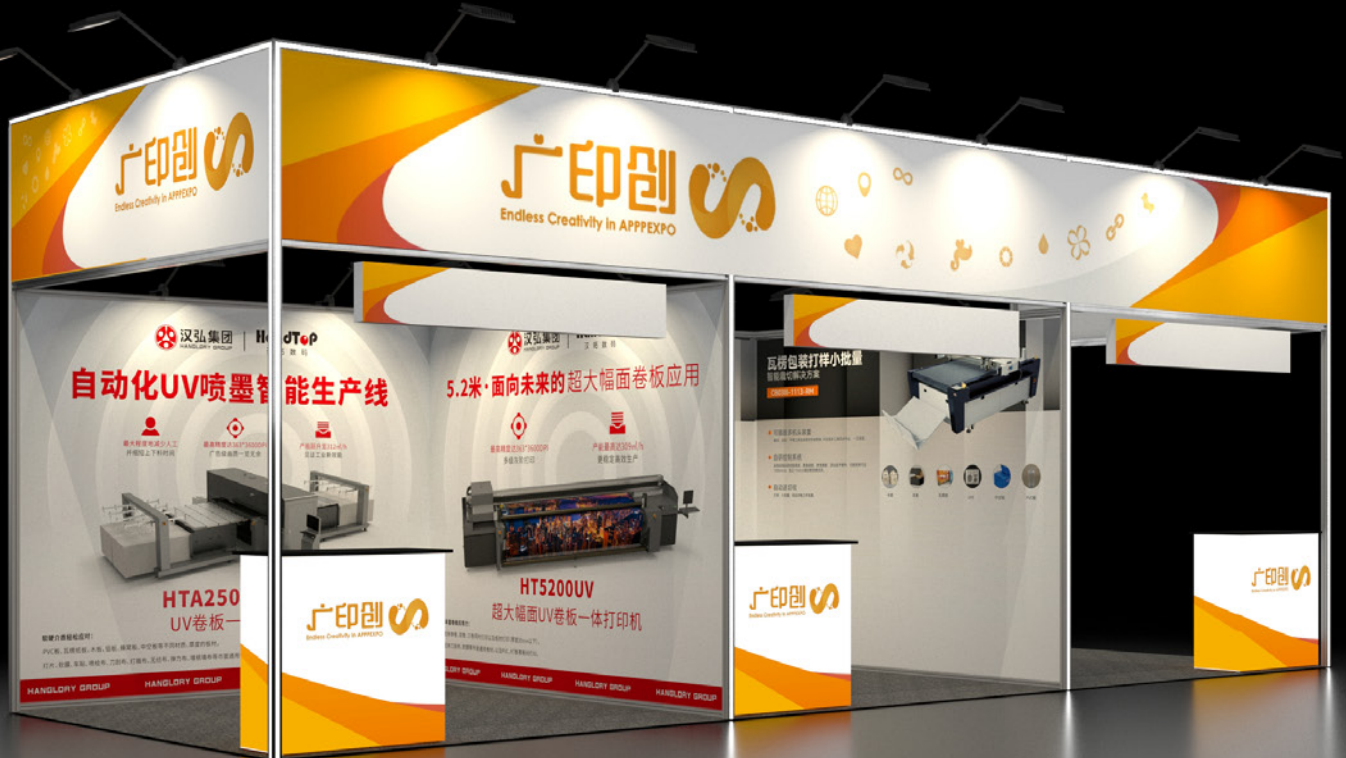
135 m<sup>2</sup>



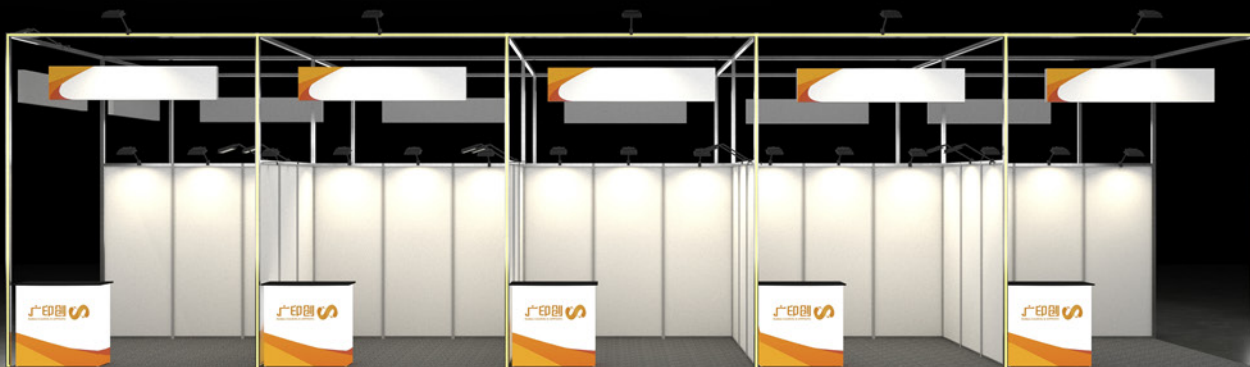
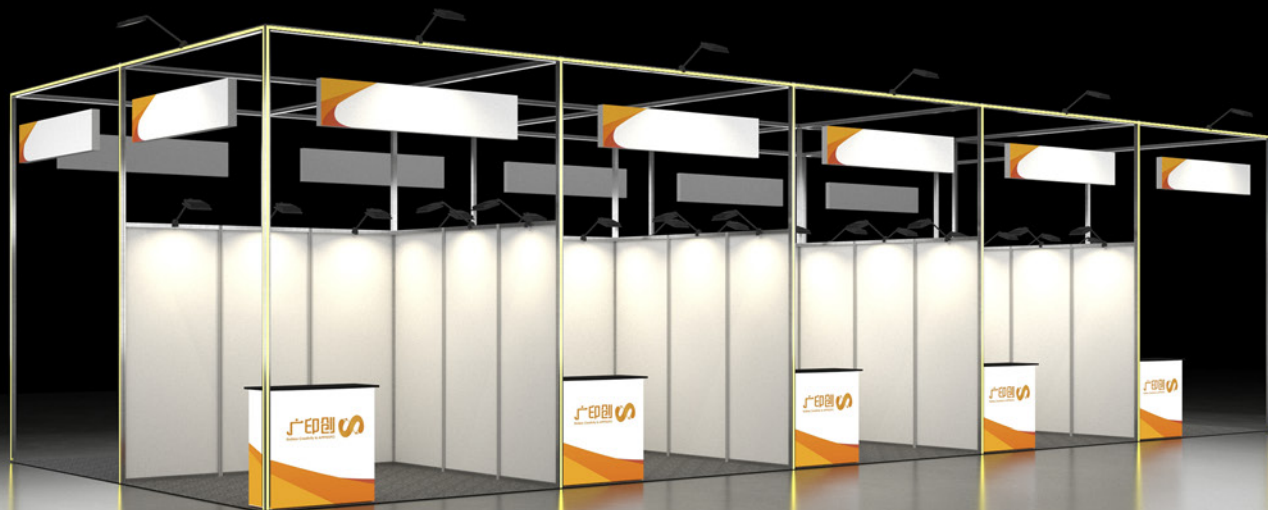
SQM/Height 135m<sup>2</sup> 5m

Time 16hours/ 6person

Surface Material SEG



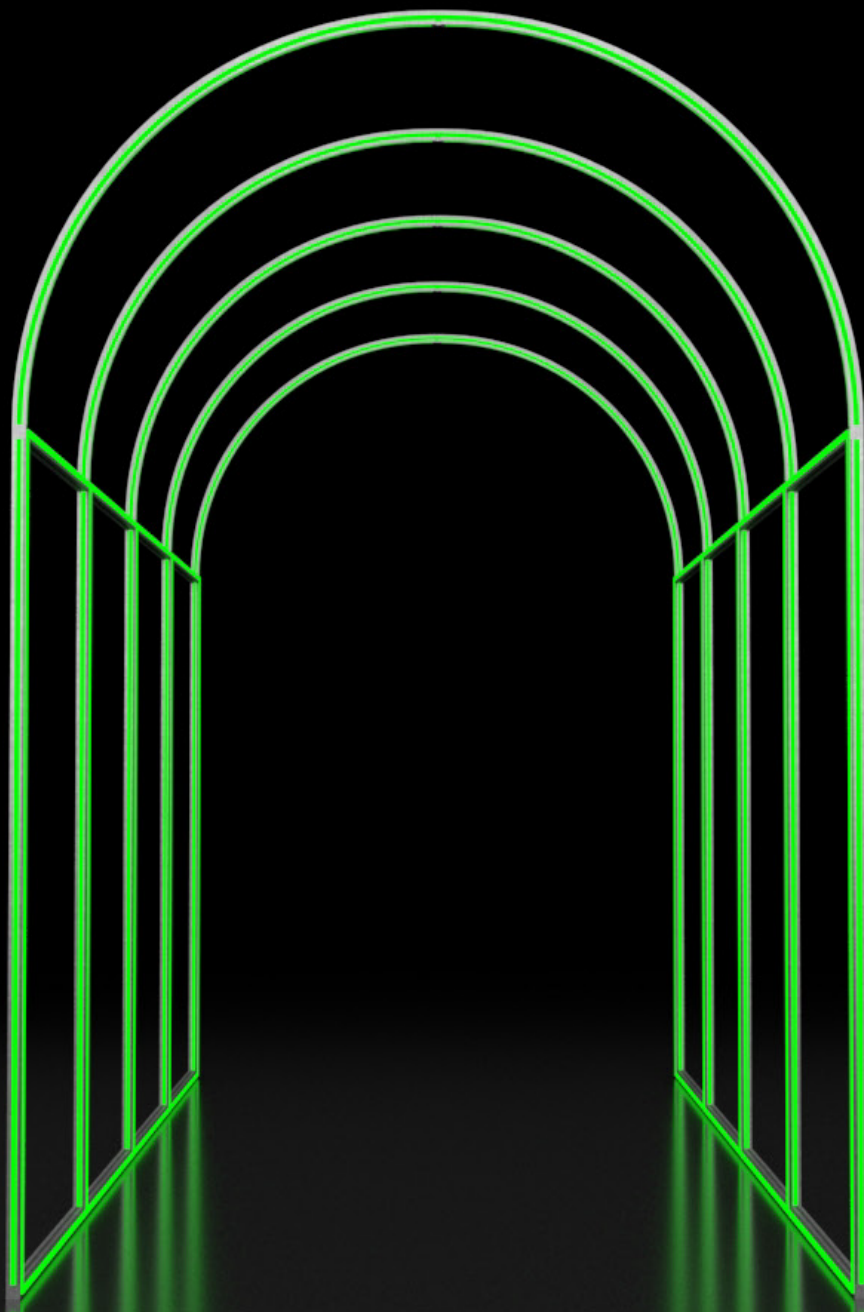
Booth Solution  
3X3 m<sup>2</sup>



---

Booth Solution

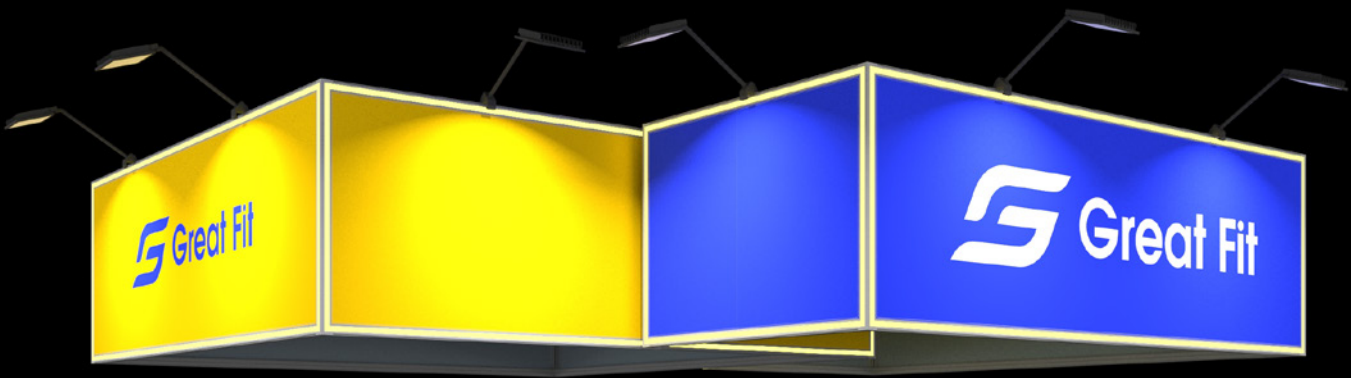
3X3 m<sup>2</sup>




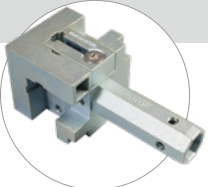


**$R \geq 1500\text{MM}$**




w3000x110000xh4500mm





BESTAR ACCESSORIES

	<p>Specifications/Name</p> <p>50 luminous profile with single light channel</p> <p>The side of the aluminum profile is reserved for LED strip installation channel to form 90-degree two-way lighting The LED strip is composed of high temperature resistant silicone sleeve and LED light There has pre-installed docking plugs on two sides of the LED strip,DC24V power supply, CE certification.</p> <p>50mm x 50mm</p>	<p>Plan View</p> 
	<p>Specifications/Name</p> <p>50 luminescent profiles with two light channels</p> <p>The side of the aluminum profile is reserved for LED strip installation channel The LED strip is composed of high temperature resistant silicone sleeve and LED light,There has pre-installed docking plugs on two sides of the LED strip,DC24V power supply, CE certification.</p> <p>50mm x 50mm</p>	<p>Plan View</p> 
	<p>Specifications/Name</p> <p>50 luminous corner tee connector Zinc alloy 50mmx50mmx50mm</p>	<p>Plan View</p> 
	<p>Specifications/Name</p> <p>Tension lock Zinc alloy 12mmx21mmx70mm</p>	<p>Plan View</p>
	<p>Specifications/Name</p> <p>50 luminous corner tee cover ABS 50mmx50mmx50mm</p>	<p>Plan View</p> 

<p>Screwdriver</p> 	<p>Plug</p> 	<p>Adapter</p> 
--	---	--

[www.hawkdisplay.com](http://www.hawkdisplay.com)

Add:

(Office) 27 Floor, Wantai Business Palaza, Changzhou, Jiangsu, China

(Factory) No.17 Shuanglong Road, Jintan Economy Development Zone, Changzhou, Jiangsu, China

Tel: +86-519-83903811

E-mail: [info@hawkdisplay.com](mailto:info@hawkdisplay.com) [marketing@hawkdisplay.com](mailto:marketing@hawkdisplay.com)