

INSTALLATION STEPS 10.09

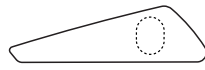
Never Run-Off-Tracking & Antistatic Roll up



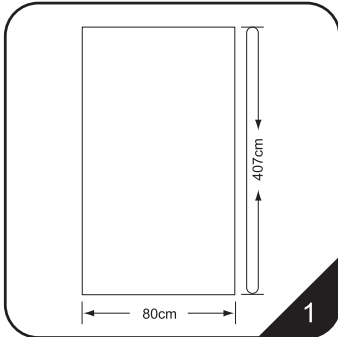
K-3F



K-3FJ

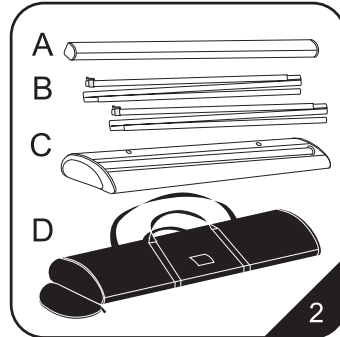


R-3F



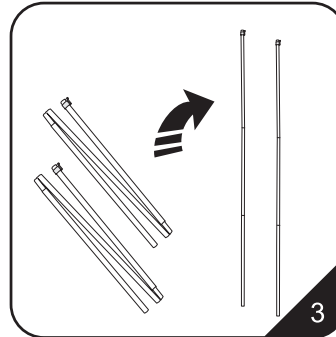
1

1.The overall width of the stand is 80cm, overall length of graphic is 407cm, the visible graphic height is 200cm.



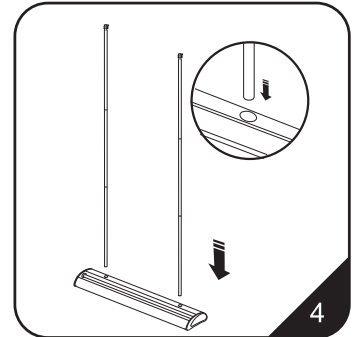
2

2.The case should contain:
Installation instruction
A. an upper shell B. 2 sets of 3-piece poles
C. a base unit D. a black bag



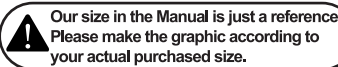
3

3.Unfold the pole and slip the pieces together to assemble it to a rigid pole.

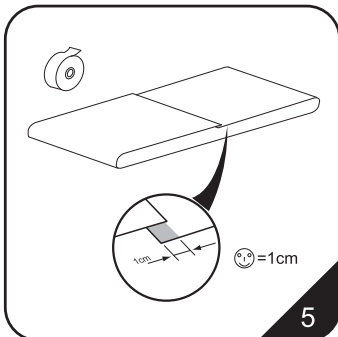


4

4.Insert the assembled pole into the base hole.

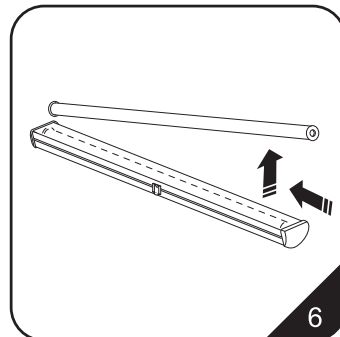


Our size in the Manual is just a reference.
Please make the graphic according to your actual purchased size.



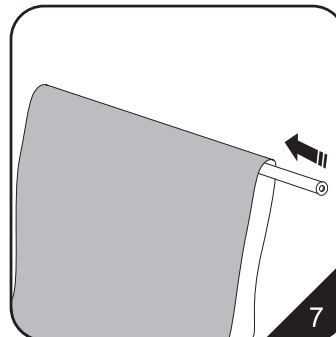
5

5.Stick the two ends of the graphic together with a transparent adhesive tape. The recommended adhesive width is 1cm.



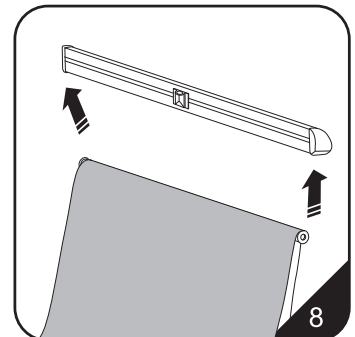
6

6.Pick up the upper roller out of the shell by pushing the roller toward on side.



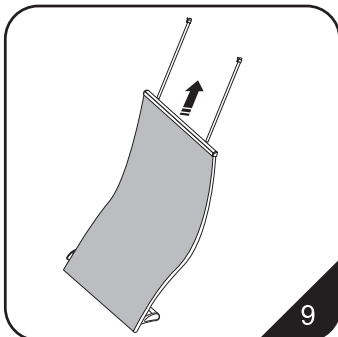
7

7.Put the upper roller into the graphic circle.



8

8.Put the upper roller into the shell by pushing the roller toward one side again.



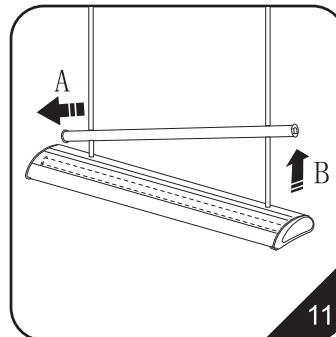
9

9.Pull the graphic completely.



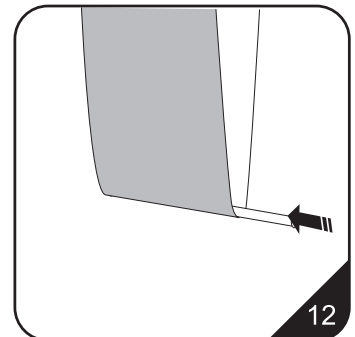
10

10.The plastic holder at the top of pole slips into the rear slot of the upper shell. A marker on the shell indicates the shell's centre where the pole should be inserted.



11

11.Pick up the roller (B direction) by pushing the roller toward one side (A direction).



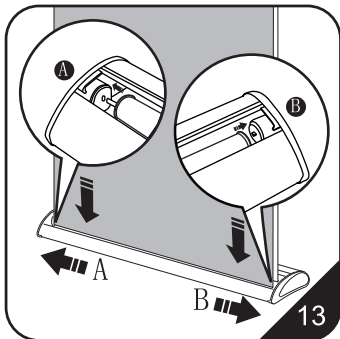
12

12.Put the bottom roller into the graphic circle.

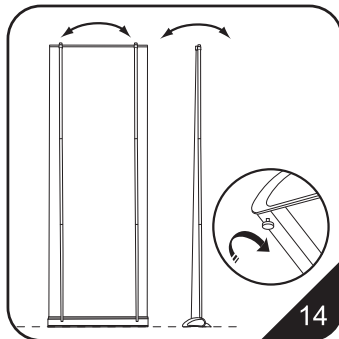
NEXT PAGE



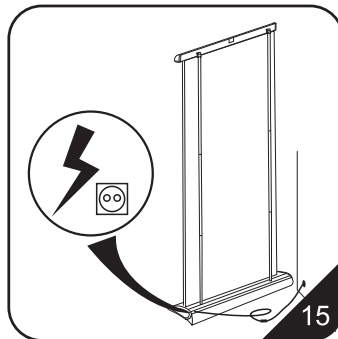
CAUTION:
PLEASE READ THE INSTRUCTIONS BEFORE INSTALLING PRODUCTS



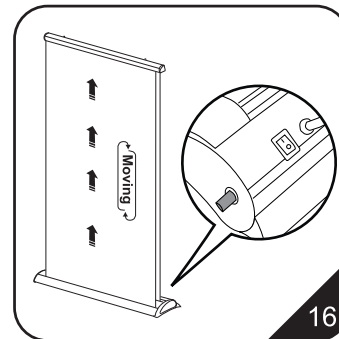
13. Put the roller into base unit and push it toward one side for fixing. Reattach the cover board on the base unit.



14. The unit can be leveled by adjusting the threaded feet at the bottom of the base unit.

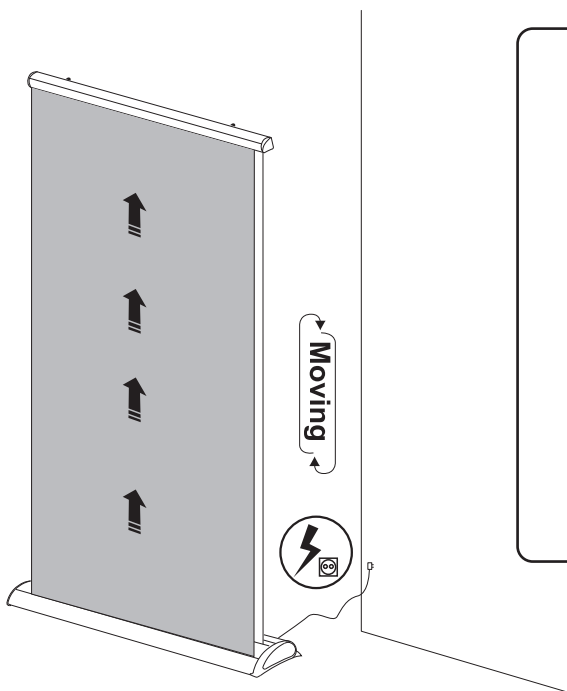


15. Make sure the electrical line is smooth then connect with power.



16. Turn on the switch. The graphic start moving. there is a fuse in the side.

⚠ Please make sure the voltage is appropriate and the connector Jack can match with the plug

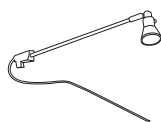


⚠

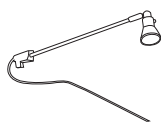
DO NOT PULL THE GRAPHIC TO AVOIDING THE MOTOR DAMAGED WITHOUT POWER

DO NOT PULL THE GRAPHIC CONVERSELY TO AVOIDING THE MOTOR DAMAGED WHEN SCROLLING

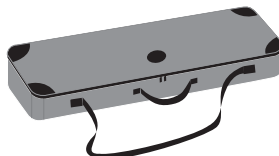
Optional accessories



C-D1/D2
Voltage: 110V/220V
CE certified.
Fit on all models.
Color: Black/Silver



C-D1-LED/C-D2-LED
Voltage: 110V/220V
CE certified.
Fit on all models.
Color: Black/Silver



C-11-X5